

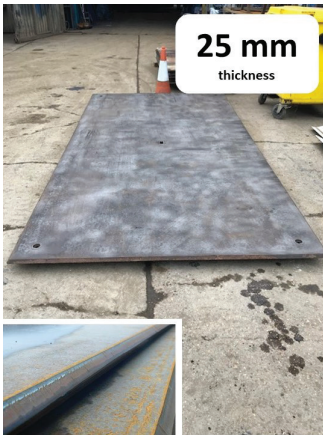
# road plate hire

✉ sales@roadplatehire.co.uk

☎ 01273 493300

## ROADPLATES - BARE STEEL SMOOTH TOP - SKATE PLATE

4m x 2m x 25mm – Steel C/W SALLY



ST-400X200X25

Skating, rolling and moving large and very heavy loads is always a challenge. Poor and worn finish on concrete floors, unmade ground, inclines, cambers and unquantified subterranean conditions can make it even more so.

Invariably ducts, drains, fibre optics and culverts lay criss cross under most factories, docks, hospitals and manufacturing plants. Damaging them is not an option.

That's why we provide 'smooth topped/skating plates' in a cross section of sizes and thicknesses. Suitable for machinery skates, caterpillar skates, plant rollers and air skates.

### TECHNICAL SPECIFICATION

#### TYPICAL APPLICATIONS:

To traverse excavations up to 1700 mm wide for medium weight traffic and similar masses

Ideal for doing extended runs in roads where lifting & laying precisely and quickly is required. Eg Timed or overnight works

To cover trench up to 1,200 mm wide for trucks, heavy construction plant, cranes and forklifts

Good for skates or rollers with heavier loads across unmade surfaces

Suitable for traversing with steel tracked machinery

Of an adequate thickness to form outrigger/stabiliser pads for plant.

Also used for covering areas (block pave, tarmac & non reinforced concrete) for heavier traffic such as trucks, cranes & machinery

Square edge versions available subject to stock

As with all roadplates/crossing plates, the loadings for whatever passes over them will be transferred to the areas bearing the edges of the plate. Adequate measures to shore the underlying substrate should be taken

Individually serial numbered for tracking purposes

MASS: 1570 kgs

MECHANICAL HANDLING: Yes. Suitable forklift or overhead lifting arrangement

SALLY VERSION: Yes

ANTI SKID: N/A - Natural finish

SECURING METHOD: \*Available with counterbored holes for M18 ANKERBOLTS or similar